

Staff Gauge

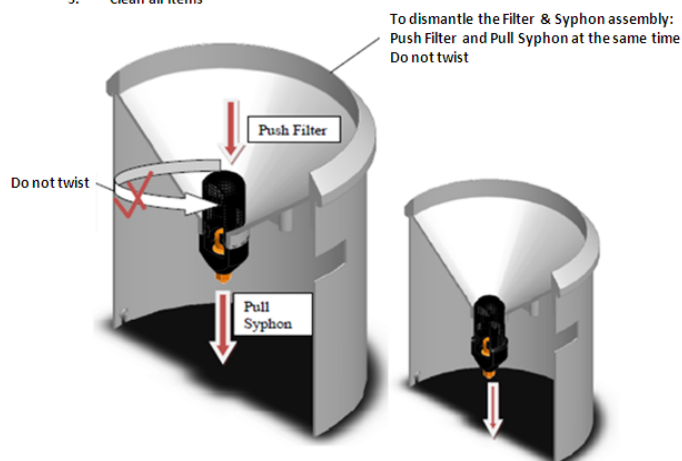
- Record the condition of the staff gauge in the MRC field inspection log sheet.
- Carefully observe the water level on the staff gauge.
- Record the observed water level in the MRC field inspection log sheet.
- If the staff gauge is damaged or difficult to read immediately contact the MRC field office to report the problem.

Rain Gauge

- Record the condition of the rain gauge in the MRC field inspection log sheet.
- On every visit, clean any objects such as leaves from the rain gauge collection bucket.
- Once per month the following must be cleaned:
 - Catch Filter
 - Syphon
 - Interior of Bucket
 - Top surface of adjusting screws
 - Enclosure locking screws
 - All insect screens

Dismantle Details

1. Unscrew nut
2. Lightly press stem down on surface until stem pops out of syphon body
3. Remove stem from syphon body
4. Unscrew cap
5. Clean all items



Do not twist the Filter or Syphon. Refer to the manual for detailed instructions to dismantle the rain gauge.

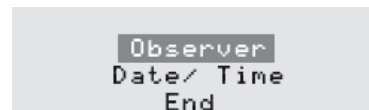
Instrumentation

- Record the general condition of all equipment and the gauging station.
- A visual inspection of all instruments must be completed.
- Make note of the water level from the staff gauge.
- Press the jog shuttle button of the OTT DuoSens data logger.

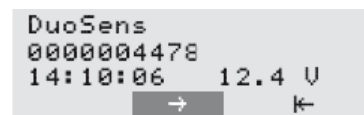
The version number will be displayed.

The meaning of the symbols on the display is as follows

- Continue
- ↵ Enter
- ← Cancel / exit / back



- Press the jog shuttle (Observer). The LCD display shows the station name, station number, time and after 2 seconds the supply voltage.



- Record the voltage in the MRC inspection sheet.
- Press the jog shuttle →.



- Wait 60 seconds for the reading to refresh.
- Record the displayed water level in the inspection sheet.

Adjust the displayed water level to the observed staff gauge level.

- Rotate the jog shuttle to ↙.
- Press the jog shuttle ↙. The number to be changed is highlighted.
- Rotate the jog shuttle until the required number appears.
- Press the jog shuttle to jump to the next number to be changed.
- To confirm the value change, press the jog shuttle.



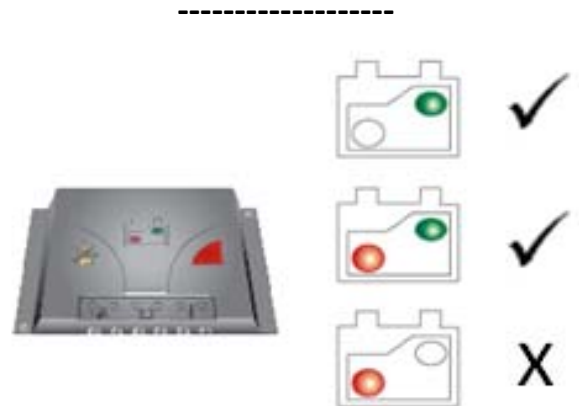
- Verify the new value is the same as the observed staff gauge level.
- Record the adjusted difference in the inspection log

Use the continue option → of the jog shuttle to access the value for Air Temperature

- Record the Air Temperature value in the inspection sheet.
- Use the exit option ← of the jog shuttle to exit the display.

Visual Inspection

Check for the following conditions and report any errors



Flashing LED ✓

Data Download

- Connect the OTT DuoLink IrDA communication unit to the PC.
- Open the Hydars3 software application

All the stations will be listed in the left hand windows pan. Expand the list by selecting the following

- MRC network (or similar name)
 - All Stations

The stations will be listed with a RED square

- Double click on the station name in the listing to open the communication window.
- Confirm the “Communication Path” port number corresponds to the USB to Serial converter
- Select the option “All Sensors”
- Select the range of dates for data to be collected
- Press the “Start” Button

NOTE: In the bottom left corner of the communication window the dates being collect will be displayed

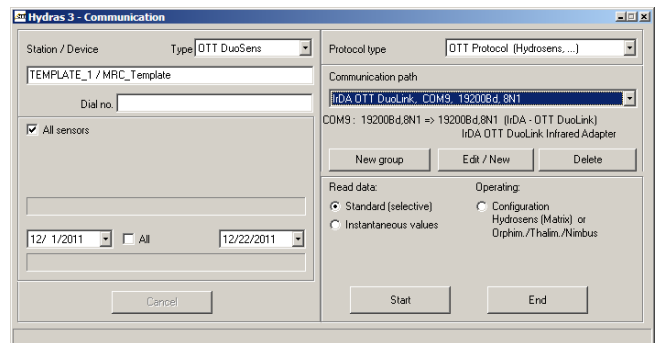
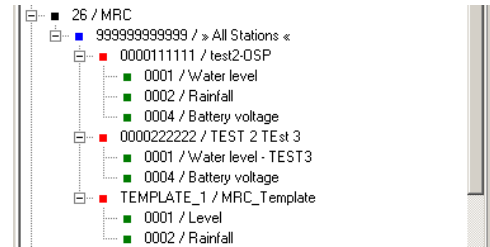
During the collection of the data the “Start” and “End” buttons are not accessible.

- Once the data download is complete press the end button to close the communication window.

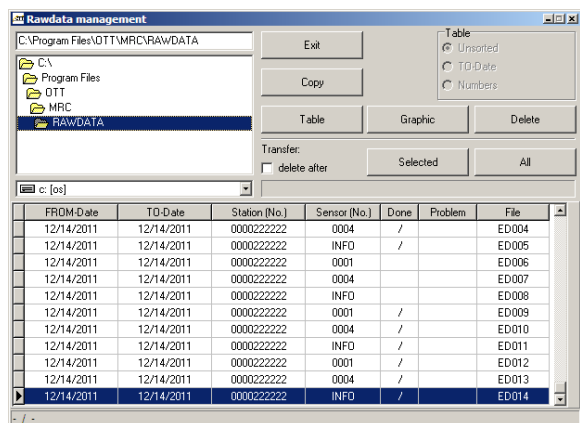
Process Data

- From the top menu select “Communication” > “Raw Data Management”

The data that has been downloaded will appear at the bottom of the Raw Data Management window. A row will exist for each sensor plus an INFO file. There is also information on the “From” and “To” dates of the data



Verify the COM Port Number



- Double click on each of the rows to process the data.
- Ensure the “/” symbol appears in the Done column of each sensor
- Once all the sensors have been processed exit the Raw Data Management window

Evaluate the Data

Each of the individual sensors are listed in the left hand window pane under the station name.

- Expand the station to view the sensors available
- Double click on the sensor to view the data graphically
- Select the range of dates that’s required to view and press the “Evaluate” button.
- To automatically scale the graph press the “CTRL” and “A” keys together on the keypad of the PC
- Verify that there are no data gaps
- Verify the data gives a valid representation of the water conditions

